

TECHNOLOGY FOR THE WELDER'S WORLD

ABI-FLUX

**ABICOR
BINZEL®**



ABI-FLUX Flux-Cored Welding Guns

Self-Shielding Welding Torches - air-cooled

ABI-FLUX - the new generation of flux-cored self-shielding welding torches - suitable for extreme applications in pipeline construction, cladding and rail-joint welding, as well as repair work. Equipped with quick-change 360° rotatable torch neck, and a heavy-duty highly flexible steel core cable for applications down to -22° F (-30° C), the ABI-FLUX provides optimal handling and ease of operation.

Technical Data (IEC EN 60 974-7)

Rating: 330 A with self shielding Flux-Cored Wire

Duty Cycle: 60%

Wire Size: .045"-.094" (1.2mm - 2.4mm)

Ceramic insulation, extreme high temperature durability

Quick-change torch necks, 360° rotatable with 45°, 65°, or 90° bend

Standard equipped with copper contact tips.

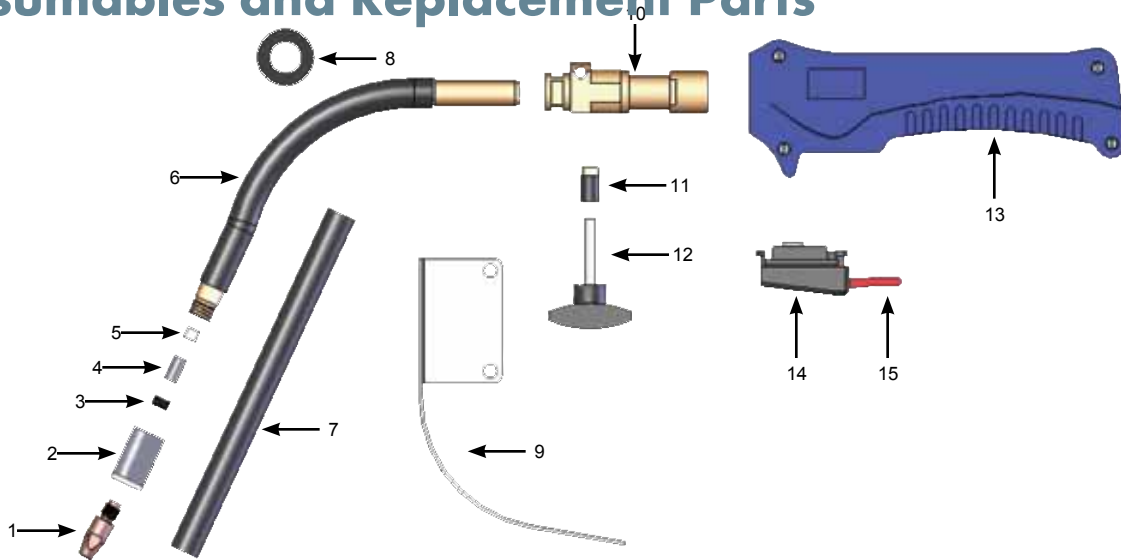
Highly flexible steel core cable for applications down to -22° F (-30° C)

Robust hand protection shield made of aluminum, provides optimal heat deflection

Ordering Chart

FC	315	-	45	-	116	E
Torch	Amp		Neck Angle		Wire Size	Back End
FC - Flux-cored						Back End
Amperage	315 - 300 Amp (Air-cooled), 15 Foot Length					E - Euro L - Lincoln M - Miller
Neck Angle			45 - 45 Degree 65 - 65 Degree 90 - 90 Degree			Wire Size
						116 - 1/16 Inch 332 - 3/32 Inch

Consumables and Replacement Parts



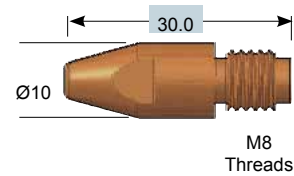
Front End Body-Handle Assembly

Item No.	Description	Part No.
1	Contact Tips	see below
2	Thread Protector	013.D132
3	Thread Insert M8	013.D139
4	Steel Sleeve	013.D138
5	Ceramic Sleeve	013.D137
6	Swannecks	see below
7	Insulating Tube for FC-45 Swanneck	013.D171
7	Insulating Tube for FC-65 Swanneck	013.D146
7	Insulating Tube for FC-90 Swanneck	013.D128

Item No.	Description	Part No.
8	Handle Cover Disk	013.D096
9	Hand Shield	181.D002
10	Torch Body M14 x 1	013.D154
11	Insulated Sleeve for 013.D166	013.D167
12	Torch Body Clamping Bolt	013.D166
13	Handle Complete	180.D051
14	Housing Trigger	400.9116
15	Trigger Switch	185.9059

M8 Contact Tips (25 per package)

CU 262	.045" / 1.2 mm	140.0442
CU 262	.052" / 1.4 mm	140.0533
CU 262	.062" / 1.6 mm	140.0587
CU 262	.078" / 2.0 mm	140.0653
CU 262	.094" / 2.4 mm	140.0677



THREAD PROTECTOR
Part No. 013.D132



THREADED INSERT M8
Part No. 013.D139



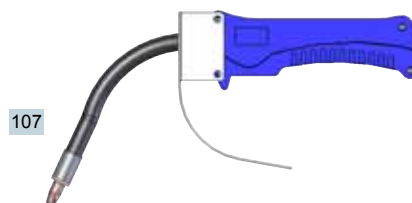
STEEL SLEEVE
Part No. 013.D138



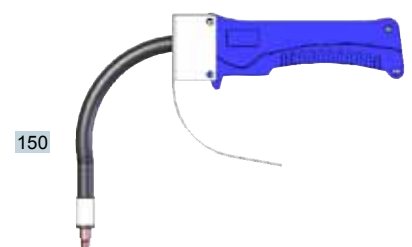
CERAMIC SLEEVE
Part No. 013.D137



45 DEGREE SWANNECK
Part No. FC-45



65 DEGREE SWANNECK
Part No. FC-65



90 DEGREE SWANNECK
Part No. FC-90

ABI-FLUX Flux-Cored Welding Guns

Body Cable Assembly & Rear Connectors



NECKLINERS

WIRE SIZE

Part No.	Inches	MM
122.D112 Neckliner	.045 - .062"	1.2 - 1.6
122.D113 Neckliner	.078 - .094"	2.0 - 2.4



GUN LINERS

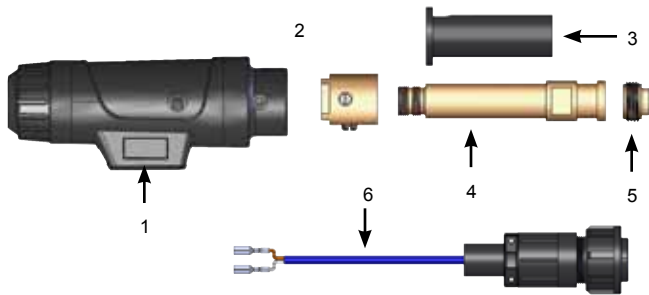
WIRE SIZE LENGTH

Part No.	Inches	MM	Feet	M
122.D107	.045-.062"	1.2 - 1.6	16	4.88
122.D115	.078-.094"	2.0 - 2.4	16	4.88



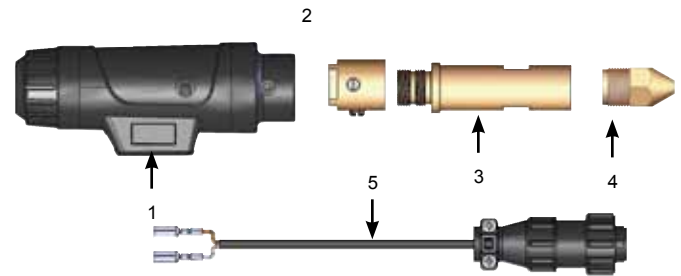
POWER CABLE ASSEMBLY - 15 FT. (4.57M)

Part No. 160.D808



DIRECT BACK END - LINCOLN

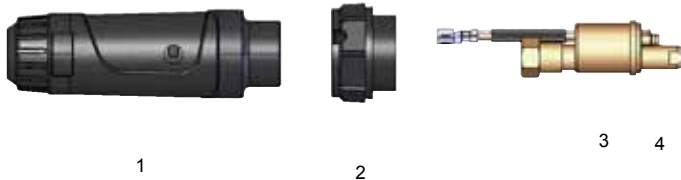
Item No.	Description	Part No.
1	Housing Complete A/C Direct Block	501.D501
2	Adapater Block Direct	501.D347
3	Insulating Bushing Film	AC2030
4	Connector Plug - Lincoln	501.9241
5	Liner Nut - Lincoln	331.9002
6	Plug Amphenol - Lincoln	175.9103



DIRECT BACK END - MILLER

Item No.	Description	Part No.
1	Housing Complete A/C Direct Block	501.D501
2	Adapater Block Direct	501.D347
3	Connector Plug - Miller	501.9964.US
4	Liner Nut - Miller	272.9019
5	Plug Amphenol - Miller	175.9122

DIRECT BACK END - MILLER



Item No.	Description	Part No.
1	Housing Complete A/C Euro Block	501.D508
2	Nut Adaptor	501.0213
3	Adaptor Block Euro w/ S-Pin	501.D378
4	Nut Liner Retaining M14 x 1	501.0129

Technology for the Welder's World.



BINZEL, S.A. DE C.V.
 Municipio de Pabellon de Arteaga 102
 Valle de Aguascalientes, 20358
 San Francisco de los Romo, Ags. MEXICO
 Tel: +52(499) 9730133
 Fax: +52(449) 9731388
 E-mail: www.binzel.com.mx

Alexander Binzel Corporation
 650 Medimmune Ct., Suite 110
 Frederick, MD 21703-8619
 Tel: 301.846.4196
 Fax: 301.846.4497

www.binzel-abicor.com

